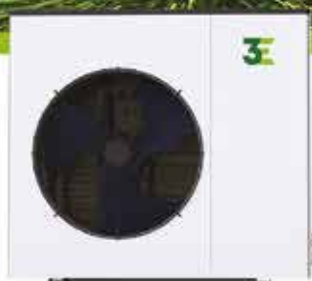


ECO HOME SERIES

EVI DC INVERTER HEAT PUMP
Split Type



WiFi



-30°C 
AMBIENT TEMPERATURE

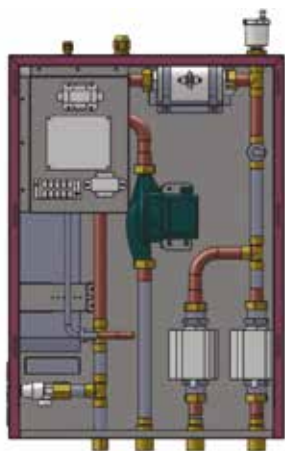
Only Heating
Only Cooling
Only DHW

Heating+DHW
Cooling+DHW

ECO HOME SERIES



The ECO HOME SERIES Split EVI DC Inverter unit is designed especially for the European market where there is a demand for Space Heating/Cooling+Hot Water. This unit can realize space heating& sanitary hot water supply through terminal units, like the fan coil, floor heating, radiator, etc. It is widely applicable to small & medium-sized apartments, large-sized villas, etc.



STANDARD EQUIPMENT



Plate Heat exchanger



Flow sensor



Built-in Circulation Pump (Grundfos)



Built-in Auxiliary E-Heater



Built-in safety valve



exhaust valve



Built-in 2 pcs of 2 Way valve (Honeywell)



Linkage switch



MONOBLOCK HEAT PUMP APPLICATION SCENARIO



Model	3E040-DKZLRS-C	3E060-DKZLRS-C
Heating Condition: Ambient Temp. (DB/WB): 7°C/6°C, Water temperature (inlet/outlet): 30°C/35°C		
Heating capacity range (kw)	7.4~12.3	11.7~20.5
Heating input range (kw)	1.5~3.3	2.4~5.6
Current range (A)	7.5~16.5	4.8~10.6
Cop range	3.69~4.9	3.67~4.88
Cooling Condition: Ambient Temp. (DB/WB): 12°C/7°C, Water temperature (inlet/outlet): 35°C/24°C		
Cooling capacity range (kw)	4.9~8.9	8.2~14.8
Cooling input power (kw)	1.5~3.7	2.5~6.0
Current range (A)	7.3~18.1	5.0~12.0
Eer range	2.41~3.27	2.47~3.28
DHW Condition: Ambient Temp. (DB/WB): 7°C/6°C, Water temperature (inlet/outlet): 15°C/55°C		
Heating capacity range (kw)	5.9~12.8	9.4~19.8
Heating input range (kw)	1.5~4.2	2.4~6.8
Current range (A)	7.3~19.7	4.8~13.6
Cop range	3.05~3.93	2.91~3.92
Erp level (35°C)	A++	A++
Erp level (55°C)	A+	A+
Refrigerant	R32	
Power supply	230V/1Ph/50-60Hz	380V/3Ph/50-60Hz
Working area	-30~43°C	
Water circulation (m³/h)	2.1	3.5
Water pressure drop (kpa)	25	30
Ip grade (level of protection)	IPX4	IPX4
Anti-electric shock rate	I	I
Noise (dB(A))	≤53	≤58
Net weight / Gross weight (kg)	150/160	180/190
Water connection (inch)	1	
Body size (W*D*H) (mm)	ODU: 1144.6X460X969.1 IDU: 500x272x700	ODU: 1106X480X1378 IDU: 500X272X700
Operating water temperature (°C) DHW	9~55°C	
Operating water temperature (°C) Heating	9~50°C	
Operating water temperature (°C) Cooling	7~35°C	
Water head (m)	6	8
Electric heater (kw)	3	

Note:

The data above is for reference only,
Please refer to the nameplate on the unit if for more specific data.



Entalpia Europe Energy

Entalpia Europe sp. z o. o.
Al. Jerozolimskie, 65/70
00-697 Warsaw
Poland

www.entalpiaenergy.eu